

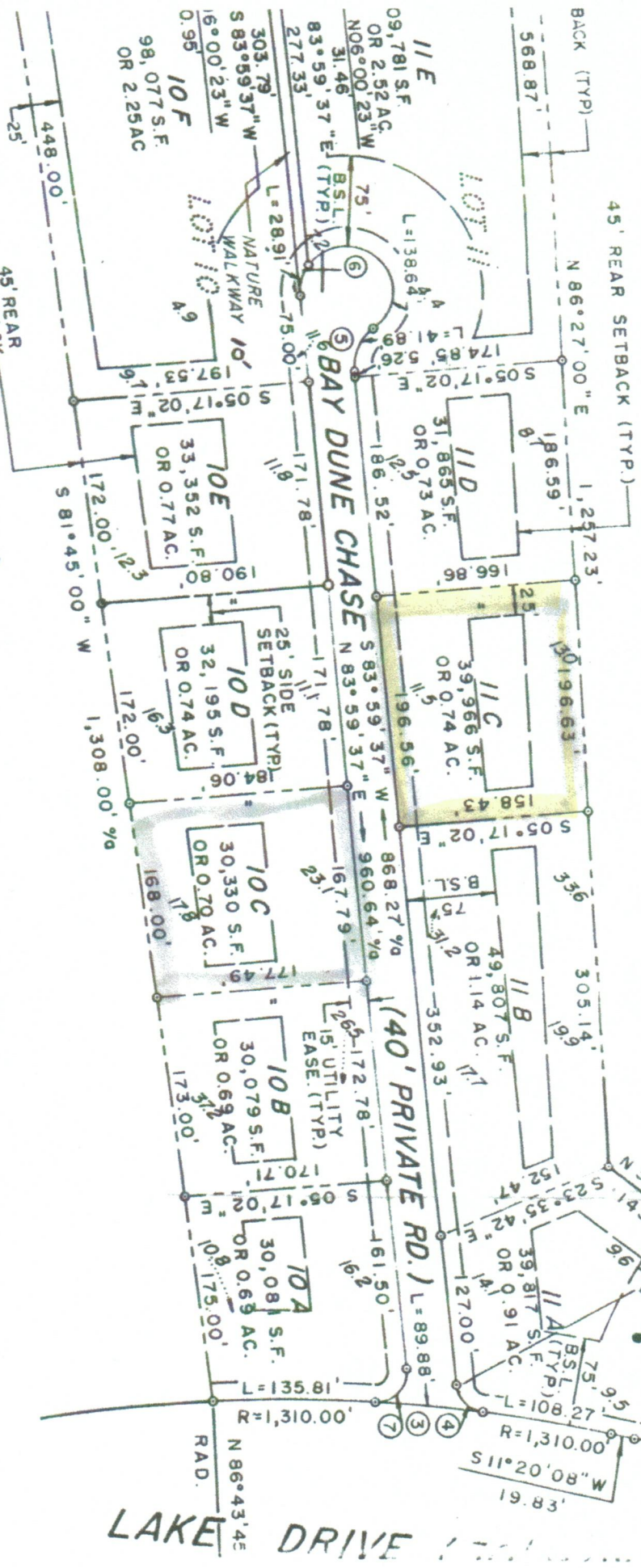
8' 40" W 1.55' M N 32° 26' 10" W 41.58'
9' 40" W 44.00'

SUBDIVISION OF BAYRIDGE
(P.B. 15, PG. 36)

LOT 12

NO TALL BUILDINGS,
TREES OR SHRUBS
PERMITTED IN THIS
AREA. (D.B. 223, PG. 534)

ROUTE 1901
(30' R/W)



LOT 9
LOT 10

NOTE: ELEVATIONS SHOWN HEREON ARE BASED ON
NATIONAL OCEAN SURVEY DATUM (0.00 = MEAN SEA
LEVEL).

**ENLARGEMENT
OF
COMMON AREA
AND THE**

**REALIGNMENT OF LOTS 10 F AND 11 E
REALIGNMENT OF LOTS 10 AND 11, BAYRIDGE**

TO BE KNOWN AS

" THE DUNES AT BAYRIDGE "

CERTIFY THAT TO THE BEST OF MY KNOW-
LEDGE THAT THE SUBDIVISION HEREIN COMPLIES
WITH STATE AND COUNTY ORDINANCES AND REGUL-
ATIONS APPROVED.

PLANNING COMMISSION

7/27/90

CAPEVILLE DISTRICT, NORTHAMPTON COUNTY, VIRGINIA